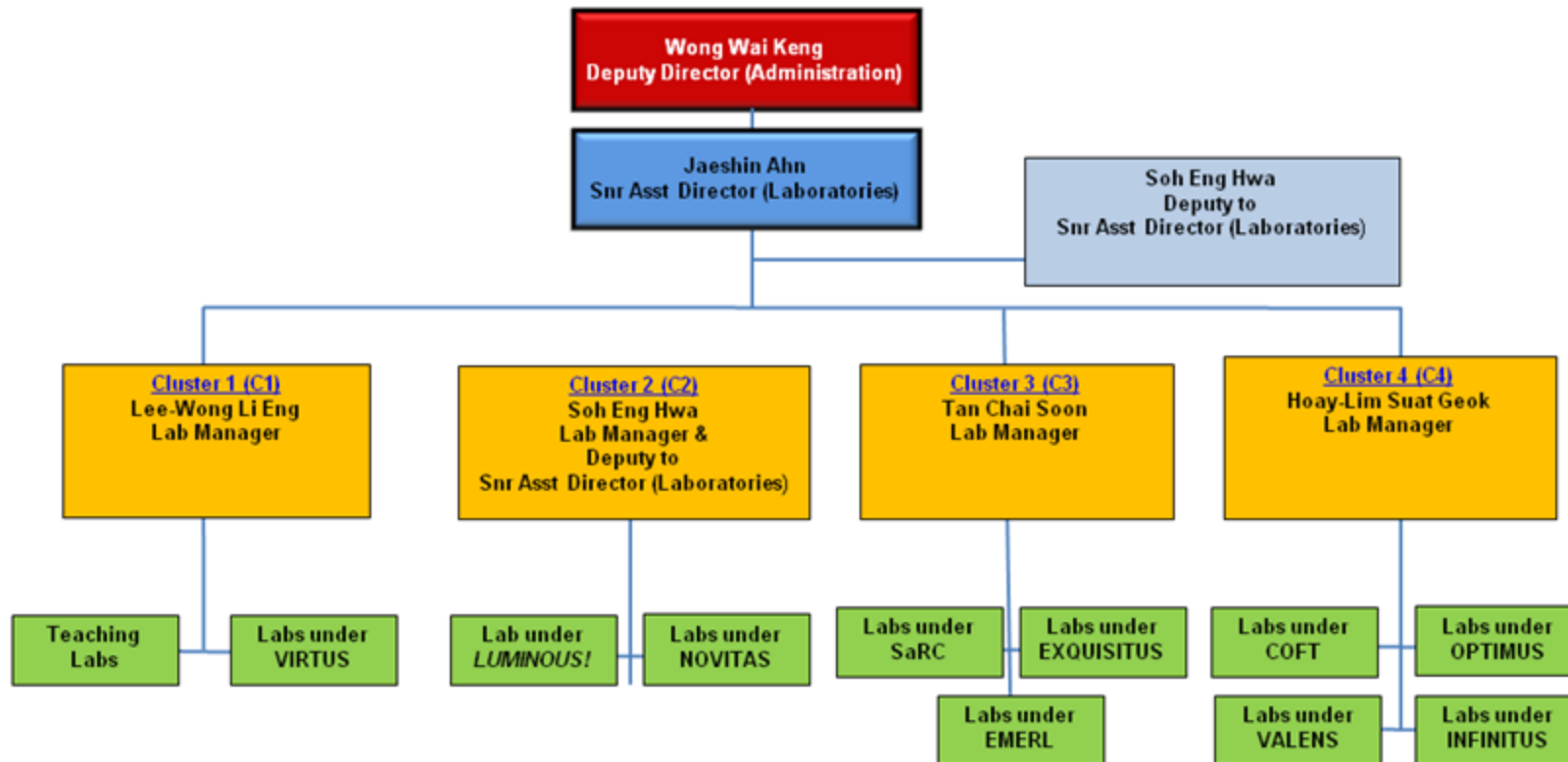


# EEE Laboratory Clustering (effective 1 September 14)



**NOTE:**

Electronic System Measurements Laboratory (ESML) [previously under VIRTUS] will be positioned under EMERL in Cluster 3.

Both Mr Wee Seng Khoon and Mr Thomas Lee Chew Siong supporting EMERL will also be deployed to Cluster 3.